

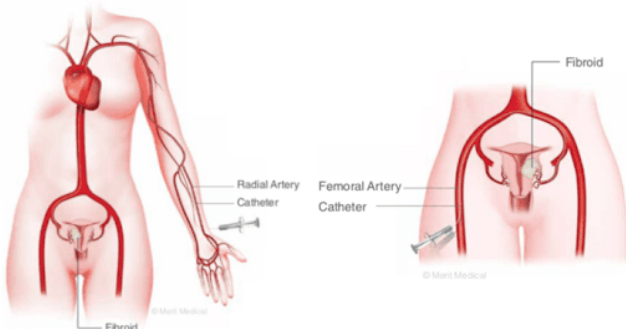
What is UFE?

Uterine Fibroid Embolization is a nonsurgical procedure that blocks blood flow to the fibroids, causing them to shrink and alleviate associated symptoms

Procedural Details

A tiny tube called a catheter is inserted into the femoral artery at the top of the leg or into the radial artery accessed through the wrist. The patient is under sedation or in a 'twilight sleep' during the procedure

- The catheter is then guided into the left and right uterine artery using x-ray and a contrast dye to visualize and map the arteries feeding the fibroids.
- Tiny embolic particles are then injected through the catheter and into the uterine arteries that feed the fibroids, cutting off their blood supply



- With the blood supply blocked, the fibroids begin to shrink, but the uterus and ovaries are spared

Advantages of the Embolization Technique



The uterus is spared



No Incision or Scar



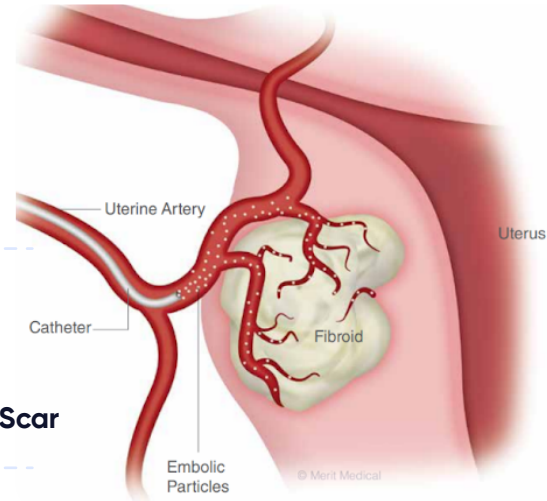
Less Risk than surgery



Quicker recovery time (1-2 weeks vs 6 weeks for Surgery)



Treat the Entire Uterus and Multiple fibroids at once



The whole procedure usually lasts about 30-45 minutes with a 2-hour recovery. After the procedure, patients can return home on the same day. Patients can be moderately active immediately after the procedure and return to full activity after 7 day

The Facts



Up to 25% of all women may be affected by symptomatic uterine fibroids and up to 30-40% in perimenopausal aged women



African American women are at an increased risk for fibroids



Symptoms can begin as early as 14 years old



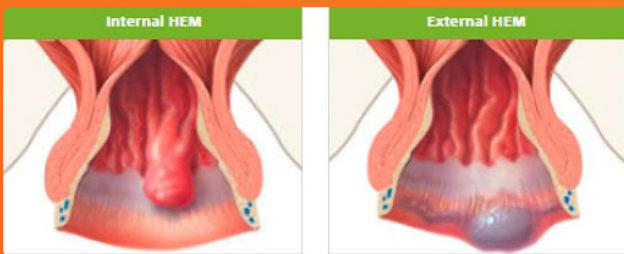
Experts do not fully understand what causes fibroids





What are Hemorrhoids

Hemorrhoids are veins found around the anus that can become abnormally enlarged due to chronic constipation or straining (such as childbirth or weightlifting). When these veins grow, they can cause symptoms such as bleeding, pain, or itchiness and can be associated with a change in bowel habits.



An interventional Radiologist performs this minimally invasive procedure under a 'twilight sleep' or under light anesthesia.



A very small catheter is introduced into the artery either in the groin region or in the forearm.



Using x-ray for guidance, the catheter is directed into the pelvis toward the arteries, providing blood to the hemorrhoids.



Those arteries are then blocked off with tiny particles as well as coils

Advantages of Embolization Procedure



Preserves anal continence



Does not involve the creation of rectal wounds



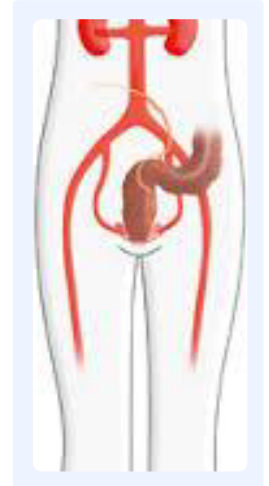
Leaves hemorrhoidal tissue in place



No general anesthesia needed



Performed in an outpatient lab and an return to full activity after 3 days of the procedure



By the numbers



More than half of Americans suffer from Hemorrhoids by the



Peak age
45-65
 years old

Age of 50



Many women

get hemorrhoids during pregnancy and childbirth



#1 Cause

of internal hemorrhoids is constipation



The recurrence rate after traditional treatment is

49%



Greater
than 90%
 success rate

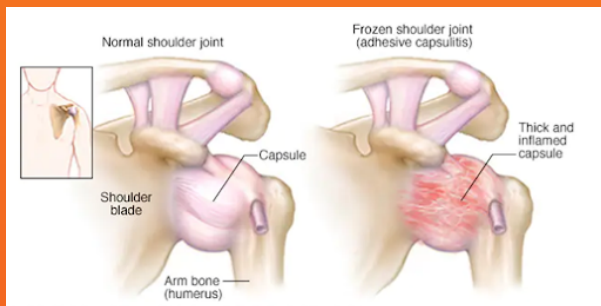


FROZEN SHOULDER



What is it

Frozen shoulder, or Adhesive Capsulitis, is a painful condition when the joint capsule becomes thick, stiff, and inflamed. The pain and thickening also leads to limited mobility of the shoulder joint.

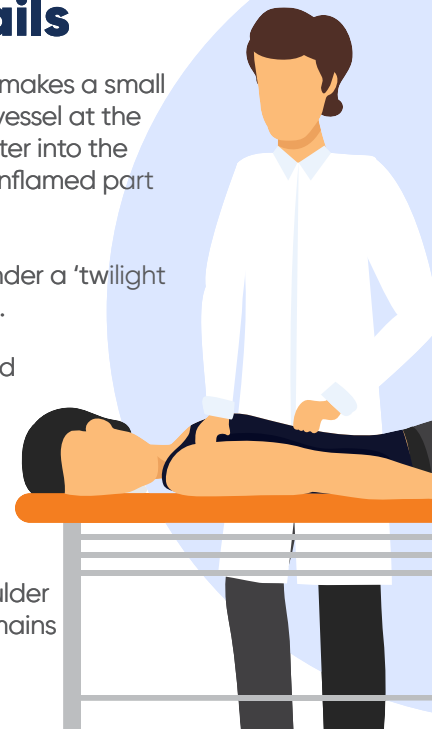


Adhesive Capsulitis Embolization (ACE)

The inflammation that contributes to the pain and capsule thickening is caused by abnormal and increased blood flow with new vessels, or hypervascularity, to the joint capsule. ACE is a minimally invasive procedure that injects microspheres into the abnormal vessels, reducing the increased blood flow, and therefore disrupting the pain-inflammation cycle. Restoring normal blood flow to the capsule has shown to reduce pain and restore motion to the shoulder.

Procedure Details

- The interventional Radiologist makes a small needle puncture into a blood vessel at the wrist and guides a microcatheter into the blood vessels that supply the inflamed part of shoulder.
- The procedure is performed under a 'twilight sleep' and is relatively painless.
- Microscopic beads are injected into the areas with abnormal vessels and hypervascularity, reducing the excessive flow causing the pain and inflammation.
- Normal blood flow to the shoulder and its surrounding tissues remains intact after the procedure



Advantages of ACE



No surgical incision, manipulation or injection into the shoulder joint



Painless procedure lasting about one hour



Symptom improvement usually within 3-4 weeks



Typically return to work within a day or two without the need for a lengthy recovery



Very low complication rate without any effect on future shoulder treatments

The facts



Frozen shoulder most commonly occurs in adults between 40 and 60 years old



Affects more woman than men



Symptoms from frozen shoulder can last from 1-3 years



Between 10 and 20 percent of individuals with diabetes develop frozen shoulder



It is common to develop frozen shoulder after a shoulder surgery or injury

KNEE PAIN ARTHRITIS

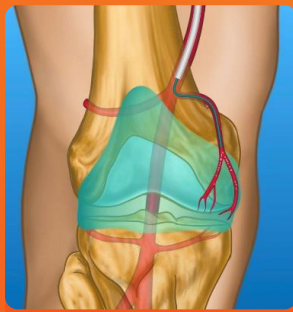


What is GAE?

Osteoarthritis is a condition that is caused by Repetitive wear and tear of the joint. Damage To the cartilage results in persistent inflammation that causes tiny new blood vessels and nerves to grow within the knee joint. Geniculate Artery Embolization is a procedure that injects microscopic beads into the areas with abnormal blood vessels so they are reduced, drastically minimizing the pain associated with abnormal vessels.

Procedural Details

- The interventional Radiologist makes a small needle puncture in to a blood vessel at the top of the leg and guides a microcatheter in to the blood vessels that supply the inflamed part of the knee.
- The procedure is performed under a 'twilight sleep' and is relatively painless.
- Microscopic beads are injected in to the areas with abnormal vessels and hypervascularity, reducing the excessive flow causing the pain and swelling.
- Normal blood flow to the knee and its surrounding tissues remains intact after the procedure.



Advantages of GAE



No surgical incision or injection into the knee joint



Painless procedure lasting about one hour



Typically return to work within a day or two without the need for a lengthy recovery



Very low complication rate without any effect on future knee replacement



Symptom improvement usually within 1-3 weeks



Why GAE?

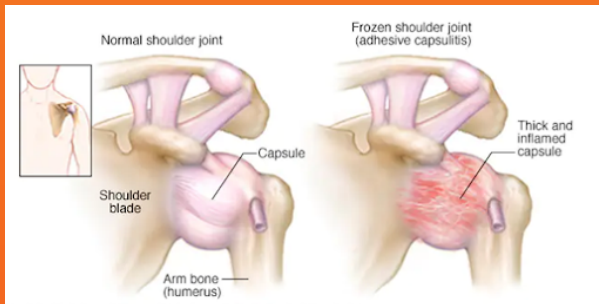
GAE is useful to relieve knee pain from OA instead of taking frequent medication or getting injections into the knee. It can also be beneficial in those who are not ready to have a knee replacement surgery. Published clinical studies by our team have demonstrated that GAE can provide pain relief without the risks associated with chronic medication or having to get repeat injections. GAE, However, is not necessarily a substitute for total knee replacement and has not been shown to negatively impact future knee replacement surgery when performed with our technique.

FROZEN SHOULDER



What is it

Frozen shoulder, or Adhesive Capsulitis, is a painful condition when the joint capsule becomes thick, stiff, and inflamed. The pain and thickening also leads to limited mobility of the shoulder joint.

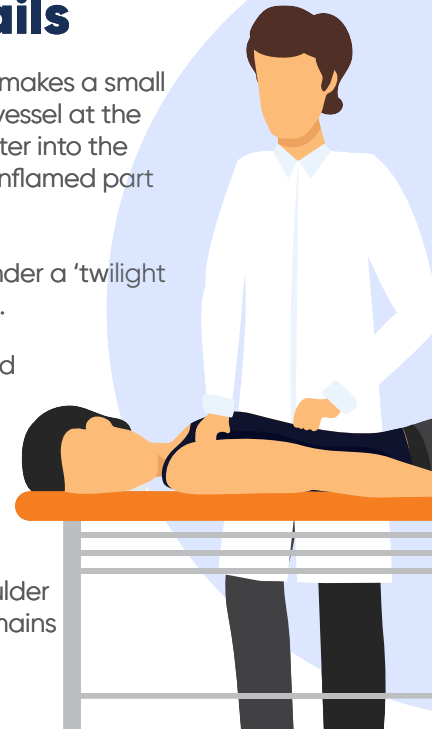


Adhesive Capsulitis Embolization (ACE)

The inflammation that contributes to the pain and capsule thickening is caused by abnormal and increased blood flow with new vessels, or hypervascularity, to the joint capsule. ACE is a minimally invasive procedure that injects microspheres into the abnormal vessels, reducing the increased blood flow, and therefore disrupting the pain-inflammation cycle. Restoring normal blood flow to the capsule has shown to reduce pain and restore motion to the shoulder.

Procedure Details

- The interventional Radiologist makes a small needle puncture into a blood vessel at the wrist and guides a microcatheter into the blood vessels that supply the inflamed part of shoulder.
- The procedure is performed under a 'twilight sleep' and is relatively painless.
- Microscopic beads are injected into the areas with abnormal vessels and hypervascularity, reducing the excessive flow causing the pain and inflammation.
- Normal blood flow to the shoulder and its surrounding tissues remains intact after the procedure



Advantages of ACE



No surgical incision, manipulation or injection into the shoulder joint



Painless procedure lasting about one hour



Symptom improvement usually within 3-4 weeks



Typically return to work within a day or two without the need for a lengthy recovery



Very low complication rate without any effect on future shoulder treatments

The facts



Frozen shoulder most commonly occurs in adults between 40 and 60 years old



Affects more woman than men



Symptoms from frozen shoulder can last from 1-3 years



Between 10 and 20 percent of individuals with diabetes develop frozen shoulder



It is common to develop frozen shoulder after a shoulder surgery or injury